



**Banyan Tree Residences Manila Bay**

D i s c o v e r   t h e   P i n n a c l e   o f   F i n e   L i v i n g



## *The Pioneer in Luxurious Rejuvenating Habitats*

For thousands of years, the banyan tree has been the sacred center of many Asian villages. It has served as a shelter for weary travellers seeking refuge and a sanctuary in the company of fellow wanderers. This is the inspiration that birthed our brand in 1994.

Today, Banyan Tree is known the world over for its luxurious abodes set against nature's splendour. A pioneer in ecologically sensitive hospitality, its reputation remains unmatched for its masterful designs, impeccable service, and indulgent serenity.

From Morocco to the Maldives and all across the globe, the Banyan Tree Group now holds an impressive repertoire of over 55 hotels, resorts, spas, galleries, golf courses, and residences across 10 global brands in 15 countries with many more exciting locations and properties in the horizon.







*Experience the Pinnacle of Fine Living*

## **Banyan Tree Residences Manila Bay**

The world-renowned prestige of Banyan Tree finally arrives on the shores of the Philippines with the development of Banyan Tree Residences Manila Bay.

Exemplary of the finer things in life, this property is the culmination of the brand's global experiences brought to the rapidly developing cityscape of Manila. As the first of its kind in the country, it has been lovingly crafted to inspire well-being and elegance, unveiling a new level of distinction, comfort, and class.



## *Your Very Own Sanctuary*

Banyan Tree Residences Manila Bay is a three tower residential development within a masterfully planned community. Here, you can retreat into your very own sanctuary, a peaceful reprieve from all the hustle and bustle of the outside world.

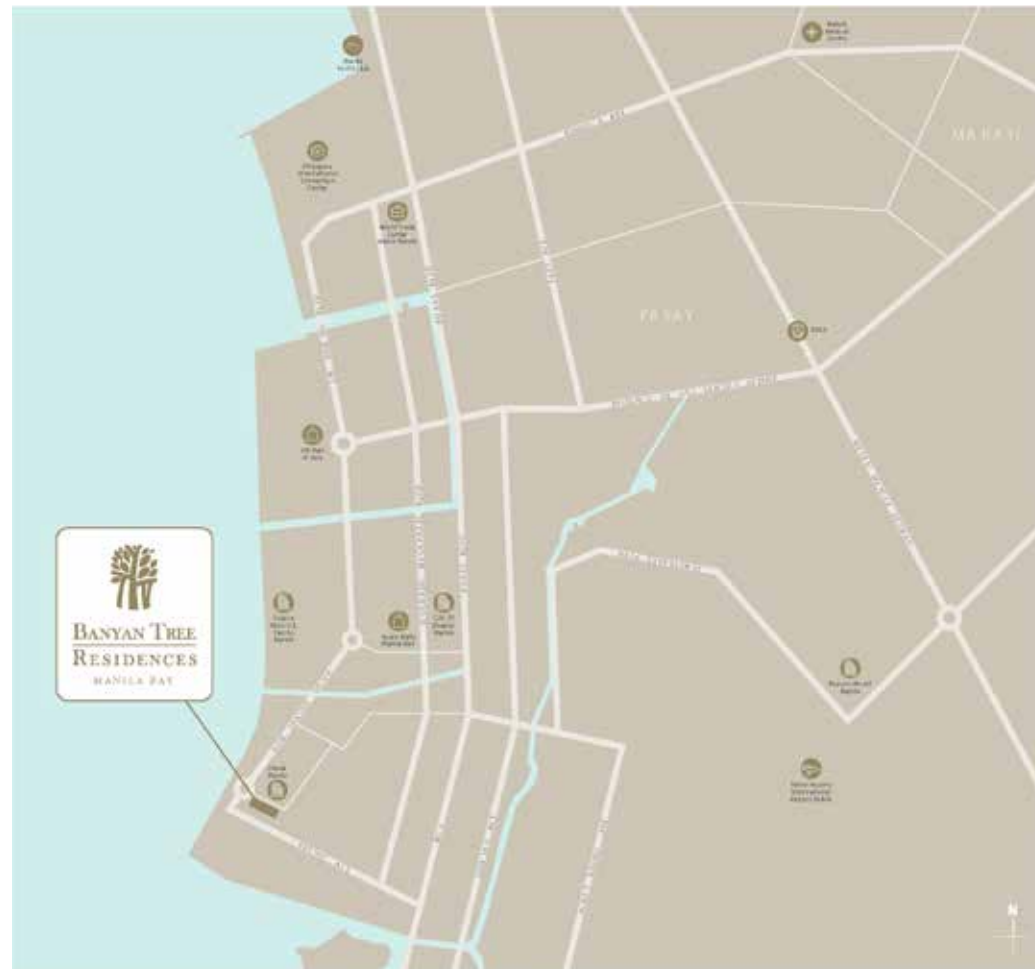
If you should want for anything more, you'll find plenty right outside your door. This integrated development is bolstered by a splendidly curated mix of shopping, dining, entertainment, and lifestyle experiences along with a hotel of luxurious accommodations.



## *Go Places in Minutes*

Time is the utmost luxury and it's never wasted at Banyan Tree Residences Manila Bay. Here, you're never too far from the goings on of the world. Its prime address means when opportunity calls, you can be there in minutes.

Whether it's a local engagement at the Central Business District of Makati or you're bound for the airport to some exotic destination, it's all just a short drive away.



### *Connectivity*

- Ninoy Aquino International Airport (NAIA) - 9 mins drive
- EDSA LRT Station - 15 mins drive

### *Nature / Leisure*

- Manila Yacht Club - 19 mins drive
- Makati City Center - 20 mins drive

### *Integrated Resorts*

- Okada Manila - 3 mins walk
- City of Dreams Manila - 6 mins drive
- Solaire Resort & Casino Manila - 7 mins drive
- Resorts World Manila - 15 mins drive
- Newport World Resorts - 15 mins drive

### *Retail / Dining*

- Ayala Malls Manila Bay - 7 mins drive
- SM Mall of Asia - 11 mins drive

### *Business*

- World Trade Center - 16 mins drive
- Philippine International Convention Center - 17 mins drive

### *Healthcare*

- San Juan de Dios Hospital - 12 mins drive
- Makati Medical Centre - 22 mins drive
- St. Luke's Medical Center Aseana City (soon to rise)



## *Weaving In Filipino Heritage*

Banyan Tree Residences celebrates the Philippines' mesmerizing creativity and artistry by putting into the spotlight its rich tradition of weaving. Manifested in the property's interiors, you'll find weaves of intricate designs along with rich, woody elements that give of a sense of naturalistic magnificence.

Truly, to reside here is to live in a masterpiece with a constant sense of awe and inspiration for your everyday. These woven elements embody the Filipino people's reputation for intertwined relationships, close family ties, and personal bonds.





# Cascading Calmness

Leave your troubles by the door and let this shimmering retreat welcome you back with the tranquility of mesmerizing water.



## *Upon Your Arrival*

You'll be greeted by the soft splashing of water cascading in ever-changing patterns over undulating steps, creating an ambiance of calm to welcome you back to your oasis.



## *A Dramatic Entrance*

You will enter through a dramatic curtain of glass that encases a delicate stream of flowing water. Every trickle moves in a captivating choreography that can form images to awe and inspire.



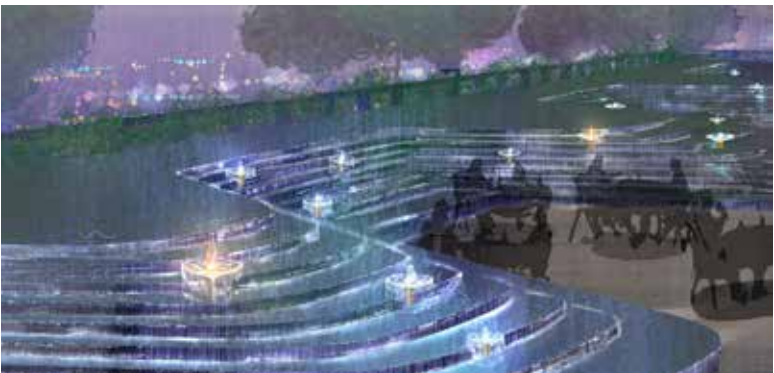
## *Surprise and Delight*

Watch for the thrill that will fill the faces of children at the Kids Play Area as columns of water erupt from the ground and unfold into plumes midair before splashing back down. The delicate water dances with lights and sounds. Hidden within the landscape are glassy parasols of water waiting to be discovered.



## *Uplifting Sights*

The atrium is filled with the hypnotic sound of gently falling rain. Above, you'll find delicate pearls of water falling from an arrangement of gilded bowls floating overhead. The columns of water dance in brilliant colors to mesmerize each onlooker.



## *Enchanting Scenes*

At the rooftop bar, water cascades down gently sloping steps. Dotted around the fountain are crystalline discs that hold a symphony of water and fire. Every table will have their own water spectacle as a centerpiece.





*Made With Your  
Children's Future  
In Mind*

*Sustainably Built,  
EarthCheck Certified*

The majesty of Mother Nature is what has allowed Banyan Tree to blossom and offer such magnificent experiences and it is only fitting that she be given the care and respect that she deserves.

To that end, the brand has always sought to maintain sustainable practices in its development and operation of its various properties around the world. This same standard applies to Banyan Tree Residences Manila Bay.



To ensure this, the development is designed according to the standards of the Platinum certification of the award-winning global program EarthCheck. This assessed the property's social, ethical, and environmental impact, certifying that it meets its rigorous standards which serve to support a sustainable future.

This ensures that Banyan Tree Residences Manila Bay will meet your needs today without compromising your children's needs tomorrow.

It is a timeless masterpiece to be enjoyed by generations to come.





## *Taste the Good Life*

At Banyan Tree Residences, your charmed life is surrounded by a vast array of delightful amenities. Here, you'll find delectable dishes from world-class chefs that are sure to wet your palette.

- Sunset Boulevard F&B (Level 1)
- Saffron Restaurant (Level 31)
- All-Day Dining (Level 31)

Have a ball where your celebrations are as splendid as your milestones.

- Wedding and Event Lawn
- Executive Lounge
- Ballroom (Level 7)
- Indoor and Outdoor Kids Club
- Suneset Deck (Level 31 Hotel Lobby)







Spend your afternoons by the sparkling waters of the infinity pool all as you watch the magnificent Manila Bay sunset burn spectacular colors in the sky.

- Residential Infinity Pool (Level 12)
- Hotel Infinity Pool (Level 33)



End your days with a toast to the best that life has to offer.

- Vertigo Bar (Level 32-33)
- Brewery





## *Wind Down Without Worry*

At Banyan Tree Residences Manila Bay, your safety will always be the top priority.

You can expect 24/7 security from highly trained personnel deployed in key outposts all over the property as well as roving guards that patrol the area to ensure zero vulnerability.

Further in, a state-of-the-art Facial Recognition System will ensure that private areas can only be accessed by owners, residents, and registered guests.







## *Your Personal Sanctuary*

Banyan Tree Residences Manila Bay is built to be a home of unprecedented proportions. Built with all the space you need to unwind, every detail is masterfully crafted with your lifestyle in mind for you to experience the precipice of fine living.

With a wide selection of unique features, every unit is distinct in their own right. From mesmerizing sunset views to verdant gardens, there's sure to be a unit that you'll find is made just for you.



# Unit Offerings

Unit Type	No. of Units	Approximate Unit Area Range	Approximate Balcony Area Range	Approximate Garden Area Range	Parking Slot
2 Bedroom	143	126-208 sqm	6-38 sqm	36-94**	1
3 Bedroom	52	194-211 sqm	11-23sqm		2
Prime 1	22	349 sqm	42 sqm	56 sqm**	3
Prime 2	22	377 sqm	50 sqm	100 sqm**	3
Penthouse 1	1	832 sqm	56 sqm		3
Penthouse 2	1	832 sqm	56 sqm		3

\*Approximate areas only in sqm. Please refer to specific units.

\*\* for select units





## *2 and 3 Bedroom Units*

Settle into your personal space at Banyan Tree Residences Manila Bay. Revel in the comfort of a cozy alcove beautifully crafted just for you.

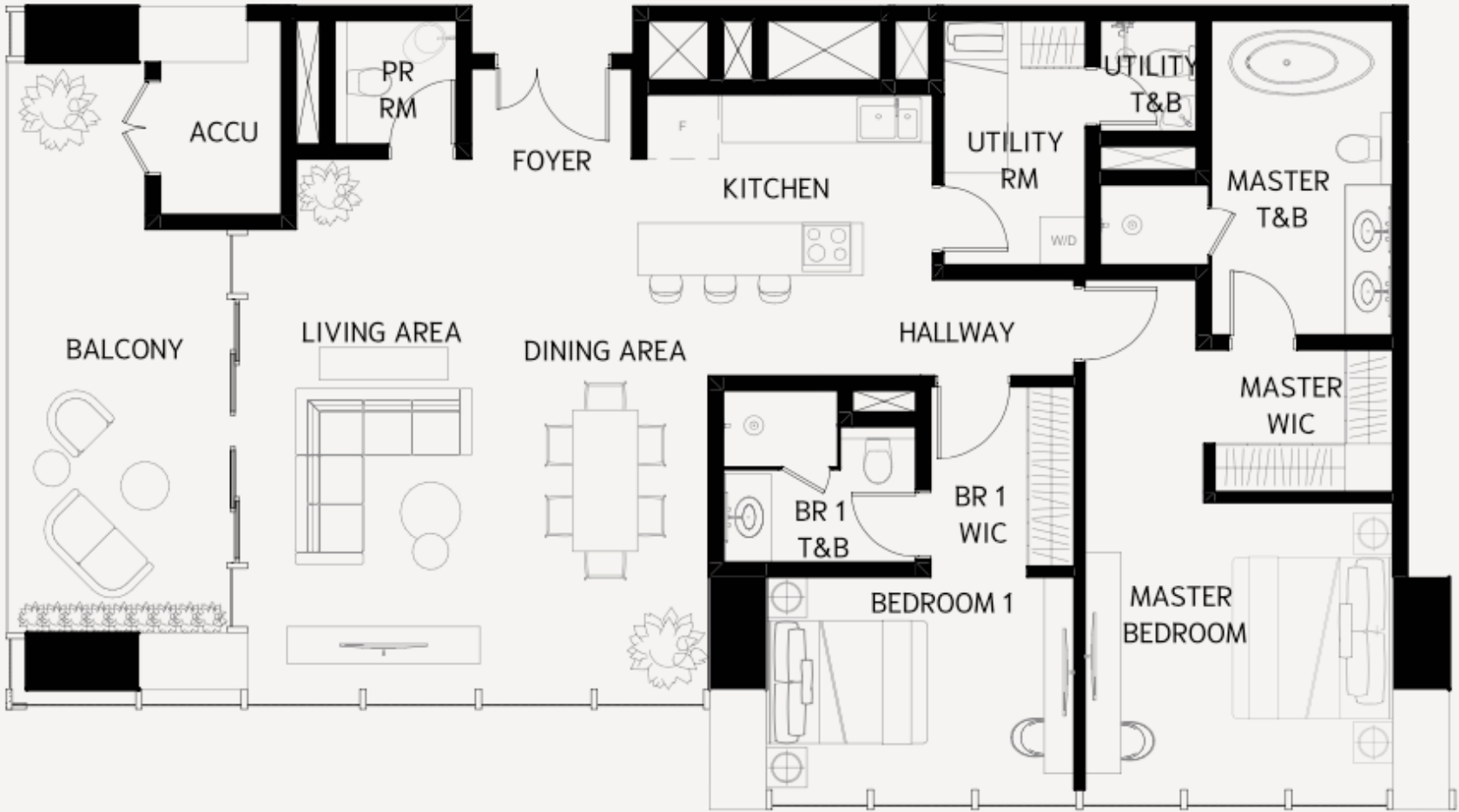






# 2 Bedroom Unit Layout

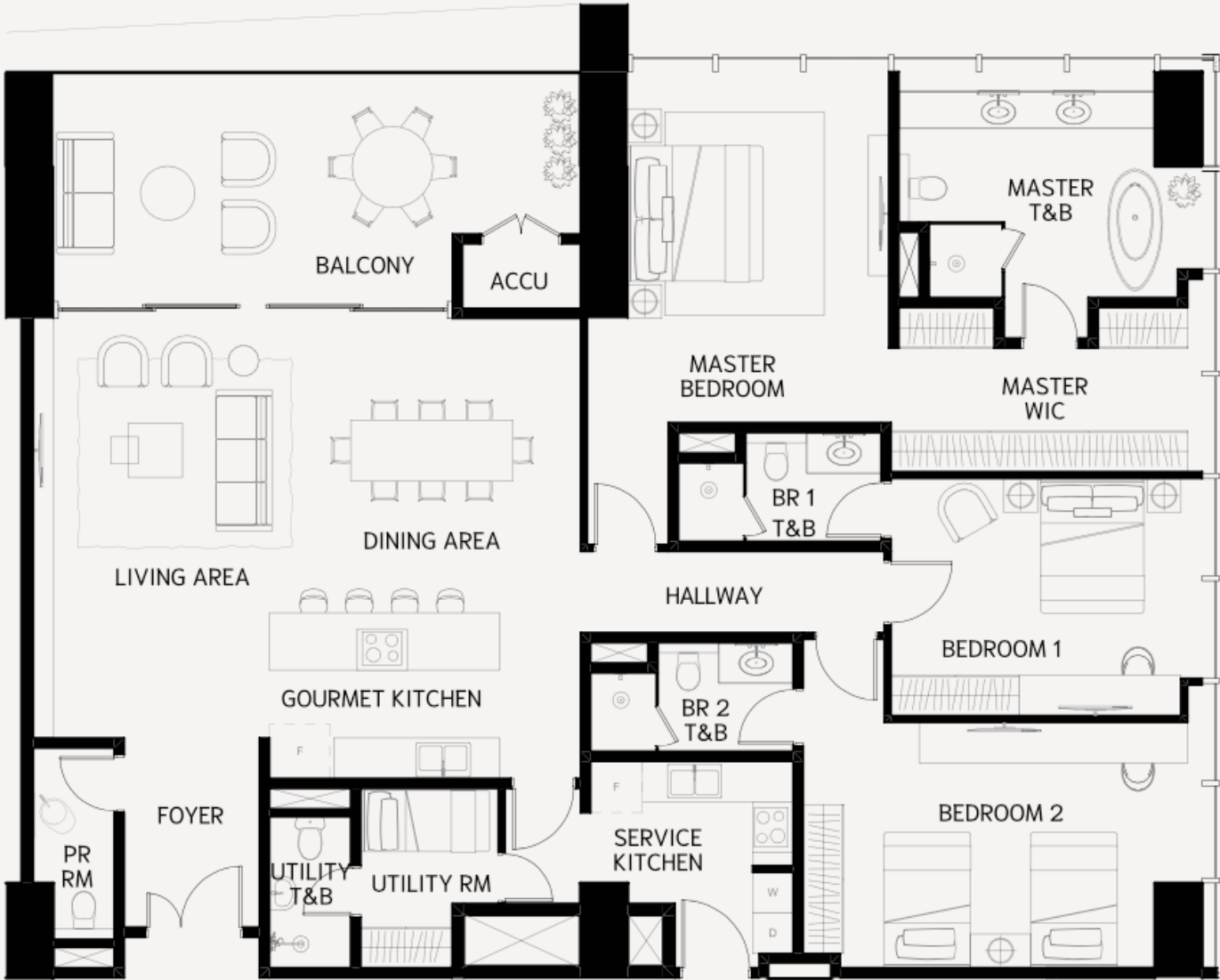
Type A Unit: 131 sqm  
Balcony: 16 sqm  
Ceiling Height: 3 m





# 3 Bedroom Unit Layout

Type A Unit: 200 sqm  
Balcony: 23 sqm  
Ceiling Height: 3 m







## *Prime Units*

Get the best views with front row seats to the refreshing oceanscape and immerse yourself in the magnificence of the world-renowned Manila Bay sunset all from the comfort of your prime unit.



# Prime Unit Layout

Prime 1 Unit: 349 sqm

Balcony: 42 sqm

Ceiling Height: 3 m



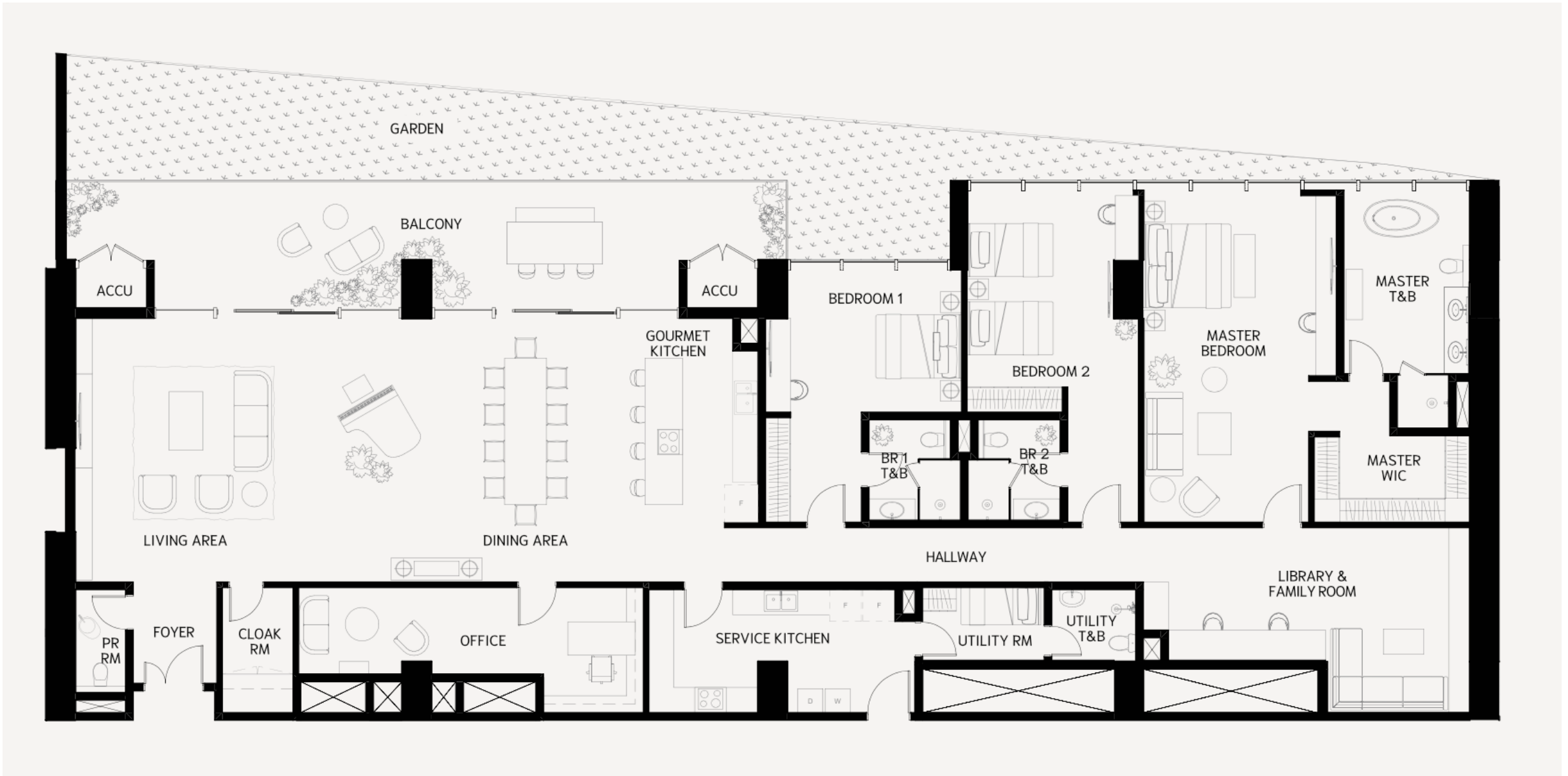


## *Prime Garden Units*

Have your own garden by the bay so you can live surrounded by lush greens and fresh florals. Soak in the natural splendor as the ocean breeze flutters through and blows away your worries.



Ceiling Height: 3 m





## *Penthouse Units*

Live above it all, far from the troubles left to the ground. Instead, look to the horizon for views of promising possibilities. The penthouse units offer a unique respite for the select few who long to settle amongst the stars.

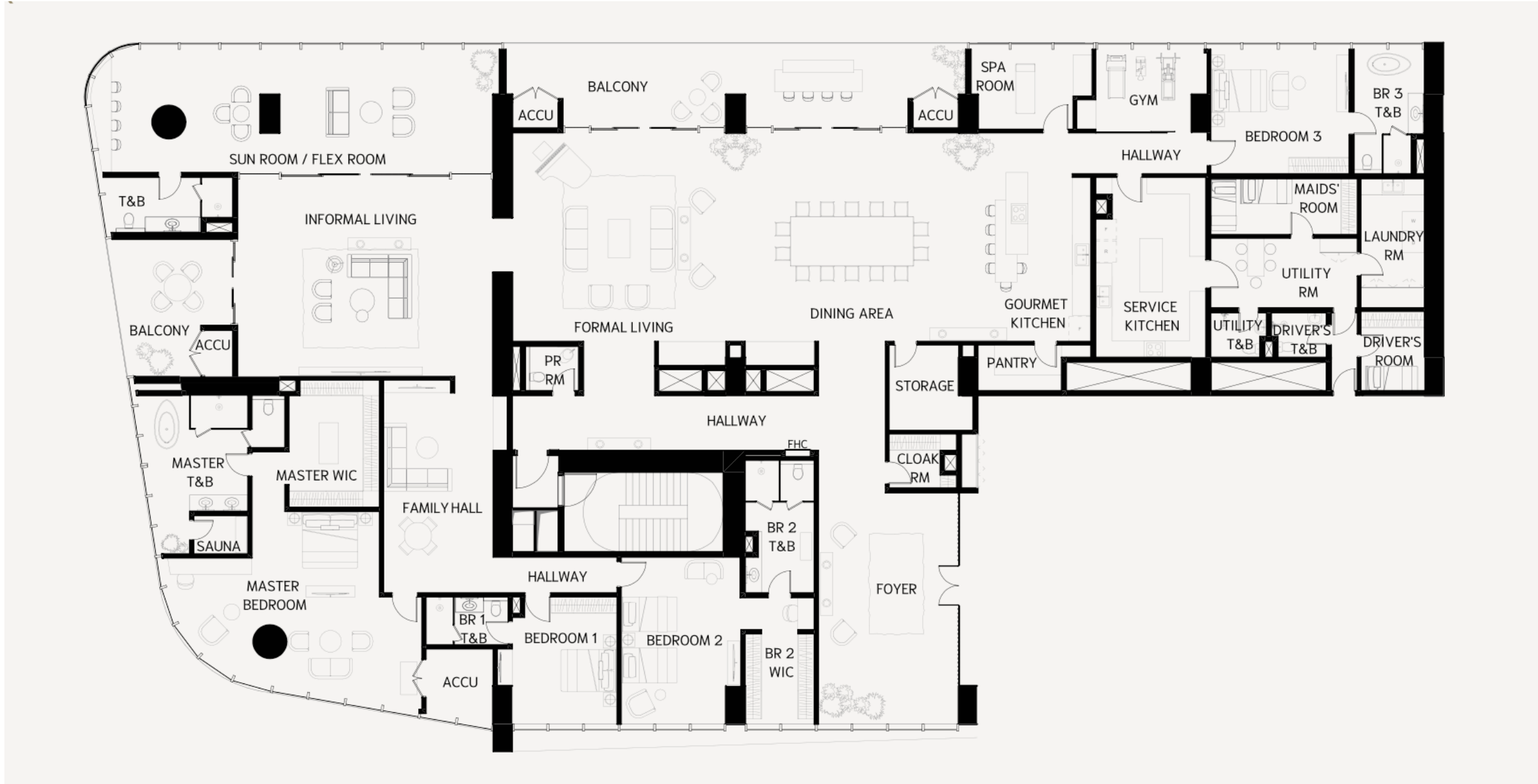


# Penthouse Unit Layout

Penthouse Unit: 832 sqm

Balcony: 56 sqm

Ceiling Height: 3 m



## *Kitchen Fixtures and Appliances*

### **Gaggenau**

Famed for its elegant industrial design and cutting edge innovation, Gaggenau Hausgeräte has provided luxury kitchenware to European aristocrats for centuries.

Made in Germany, its robust craftsmanship and revolutionary engineering make each piece a masterpiece of form and function that's sure to elevate your kitchen space.

*Hood | Cooktop - Full Surface Induction | Dishwasher | Built-In Under Fridge | Steam Oven | Microwave Oven | Coffee Machine | Wine Cellar | Fridge | Double Door Freezer*

### **Franke**

The dependable reputation of Swiss brand Franke's premium line of kitchen fixtures ensures ease and convenience for years to come. Its functional aesthetic elevates your kitchen experience from workable to wonderful.

*Kitchen Sink | Kitchen Sink Mixer*





## *Bathroom Fixtures*

### **Toto**

State-of-the-art Japanese technology meets innovative design in Toto's world-renowned bathroom fixtures. Their unique craftsmanship is sure to elevate the cleanliness and efficiency of your sanitary space.

*Smart Toilet | Undercounter Washbasin | Paper Holder | Towel Bar | Hook*

### **Kohler**

The American brand Kohler has been the go-to manufacturer of reliable bathroom fixtures of supreme quality for generations.

*Freestanding Bathtub*

### **Dornbracht**

Made in Germany, Dornbracht is one of the world's leading brands in superior designer home fixtures. Revolutionary German engineering combined with elegant design principles will give your home the comfort and convenience it needs to ensure everyday is a pleasant experience.

*Headshower | Handshower | Freestanding Bathtub Faucet*



# *A Gateway to Fine Living Around the World*

A life well-lived doesn't end at Banyan Tree Residences Manila Bay. Residential owners will also be privy to the highly exclusive Sanctuary Club. As a member, you will gain access to some of the world's most stunning vistas from equally spectacular resorts, hotels, golf courses, and experiences with unmatched benefits from each one.

- 30% discount on best available rates for hotel accommodation(2)
- 30% discount on golf green fees(3)
- 25% discount on food and beverage(4)
- 20% discount on a-la-carte spa menu
- 15% discount on gallery merchandise(5)
- 15% discount on in-house tours(6)
- 15% discount on laundry
- 10% discount on airport and ferry terminal transfers(7)
- Priority wait-list on reservations
- Early check-in / late check-out(8)
- Invitations to Xperiential Guest Program  
(i.e. pre-opening / trial stays at new resorts)

